

MASTER MANIFOLD FLOWBACK SYSTEM

Expand Automated Blow Down Operations for Multiple Wells with the MMS Increasing Efficiency, Safety and Cost

The MMS is an add-on system to the mSand that allows control and monitoring of sand dumping for multiple wells with one manifold. The MMS allows real time monitoring of operations and configurations to optimize blow down discharges.

FEATURES:

- mSand add-on package for multiple wells
- Controlled by a single mSand unit
- Sequential operation of opening/closing of complete system
- UL 508A Listed and NEMA 1, 3R, 4 and 12 Encloser

ADVANTAGES:

- Allows each sand separator to be independently dumped
- Reduce investment cost, no need for multiple mSand units
- Reduce operational costs by reduced labor and increased safety
- Full autonomous flowback blow down operation

SPECIFICATIONS

Electric Power Required: 120VAC

Temperature: -40°F to 185°F (-40°C to 85°C)

Communications: Controlled via Modbus RS485 by mSand

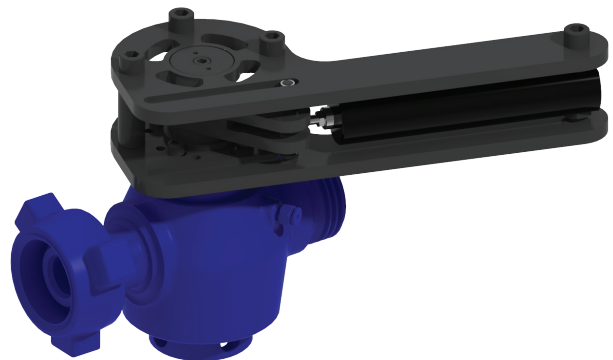
Valves per Module: 4 or 8

Iron Sizes: 2" 1502 or 3" 1502

Service Type: Standard or NACE



MMS



ESG BENEFITS

- 24/7 monitoring to prevent environmental incidents
- Reduced personnel HSE exposure and cost



Environmental-Social-Governance

MASTER MANIFOLD FLOWBACK SYSTEM

4 Well Pad Layout

